



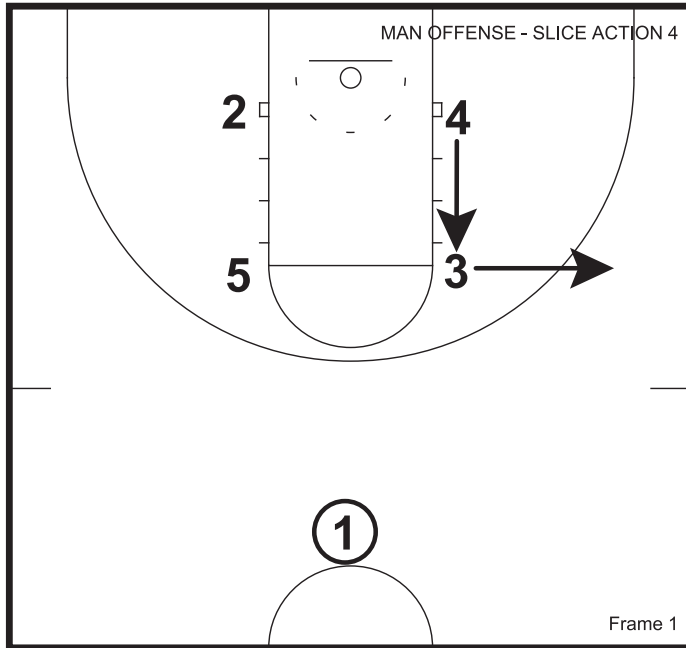
PLAYS OF THE WEEK

XAVIER NEWSLETTER #163

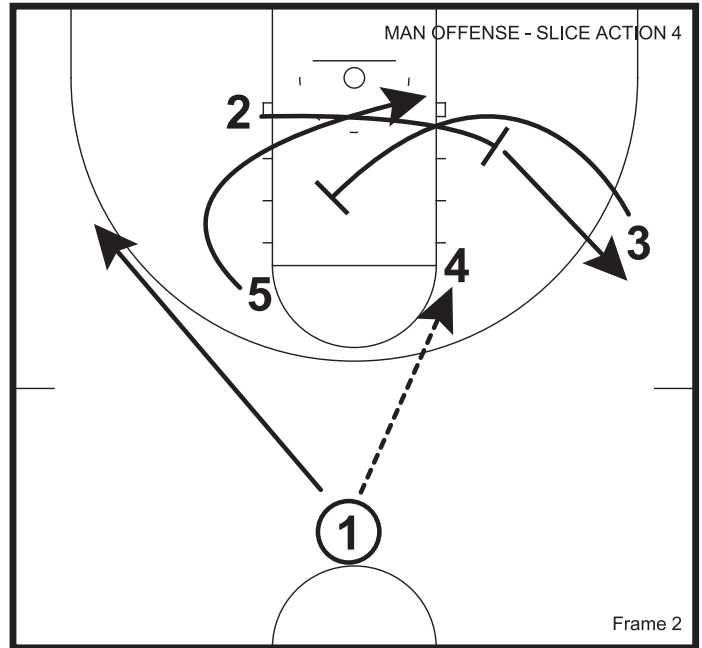
OCTOBER 15, 2013

	4
	5
	6
	7
MAN OFFENSE - SLICE ACTION 4	8
	9
MAN OFFENSE - SLICE STS	10
MAN OFFENSE - TRIANGLE MOTION	11
MAN OFFENSE - WING ENTRY AWAY	12
MAN OFFENSE - WING ENTRY HIGH/LOW	13

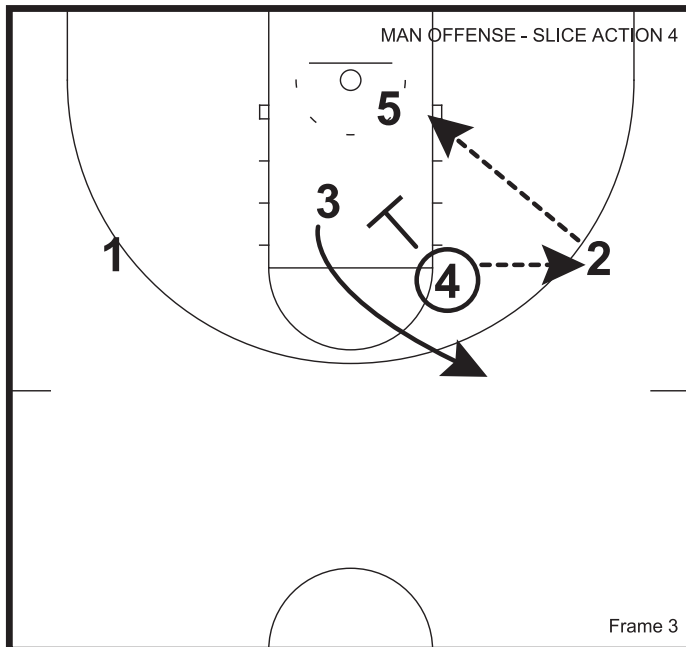
MAN OFFENSE - SLICE ACTION



3 pops to the wing.
4 pops up and replaces 3.

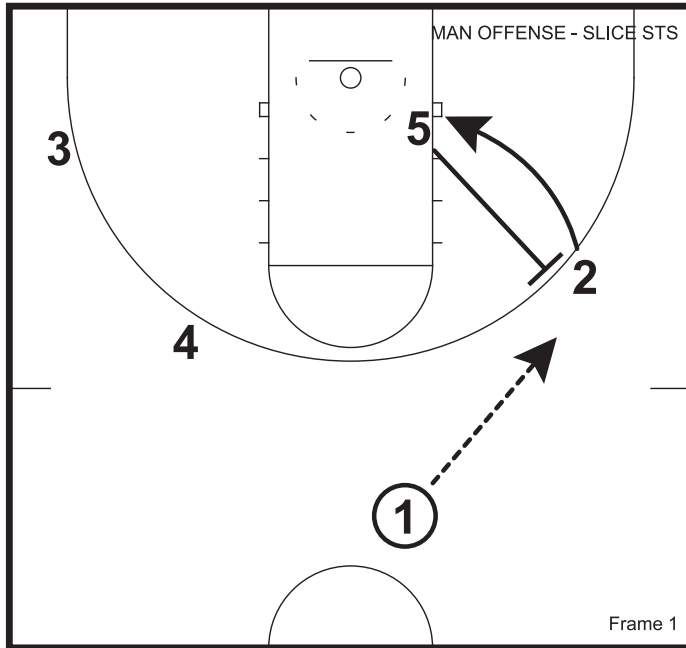


2 sets a backscreen for 3.
3 then sprints into a screen for 5.
2 pops out to catch the ball on the wing after setting the screen.

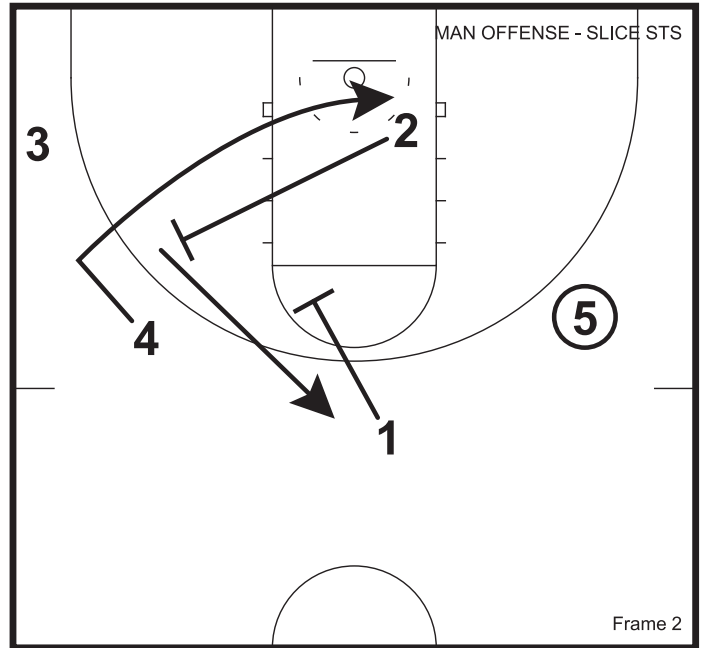


4 then finishes up the screen the screener action with a down screen for 3

MAN OFFENSE - SLICE STS



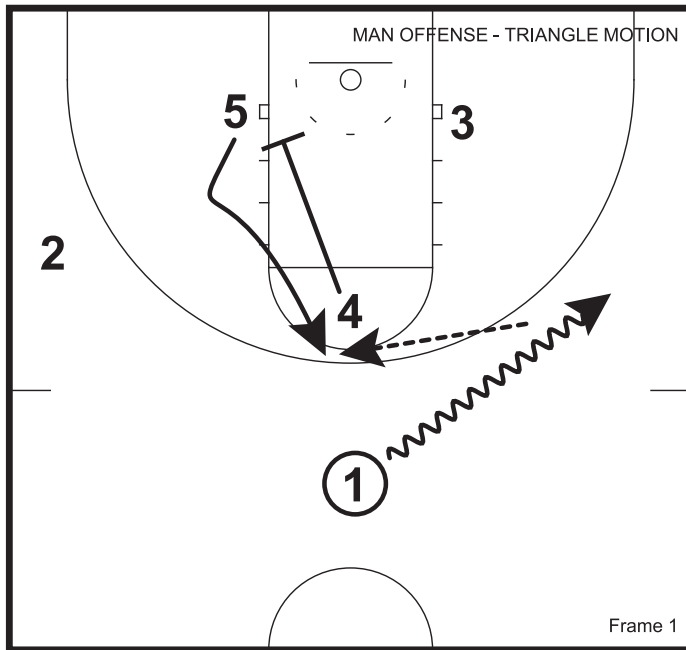
5 backscreens for 2, pops to catch.



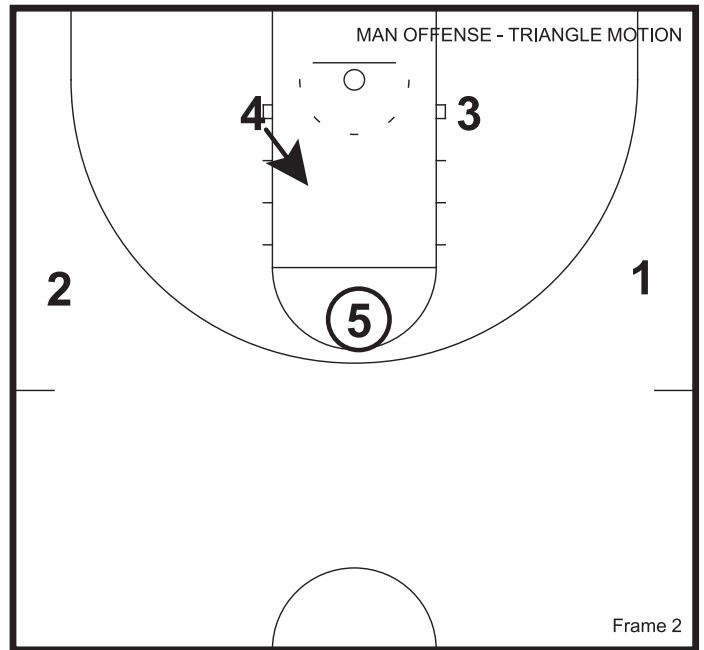
4 Acts like he's going to screen for 3, before coming off a slice screen from 4.

1 Screens down for 2.

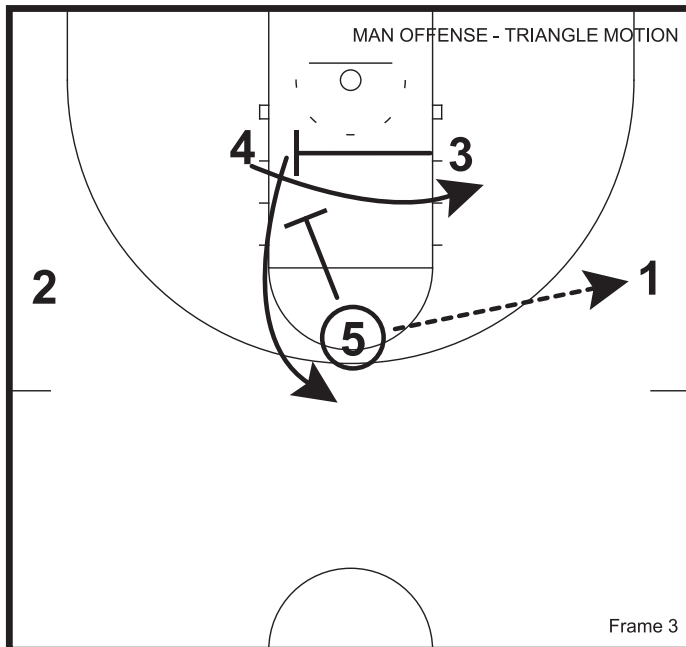
MAN OFFENSE - TRIANGLE MOTION



Dribble entry to set up continuous 'power triangle' motion.

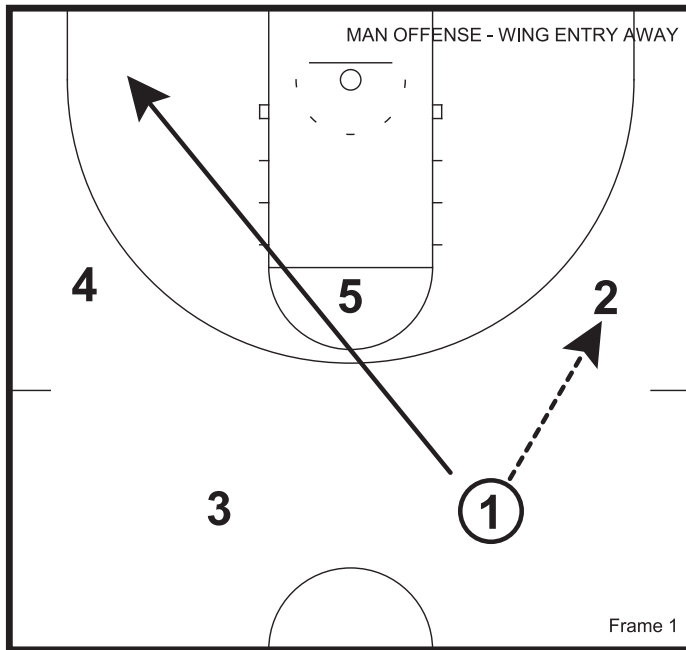


4 is looking for cross screens and duck ins at any opportunity. If there is nothing, the ball will be thrown opposite of 4 to get a low-away for him.

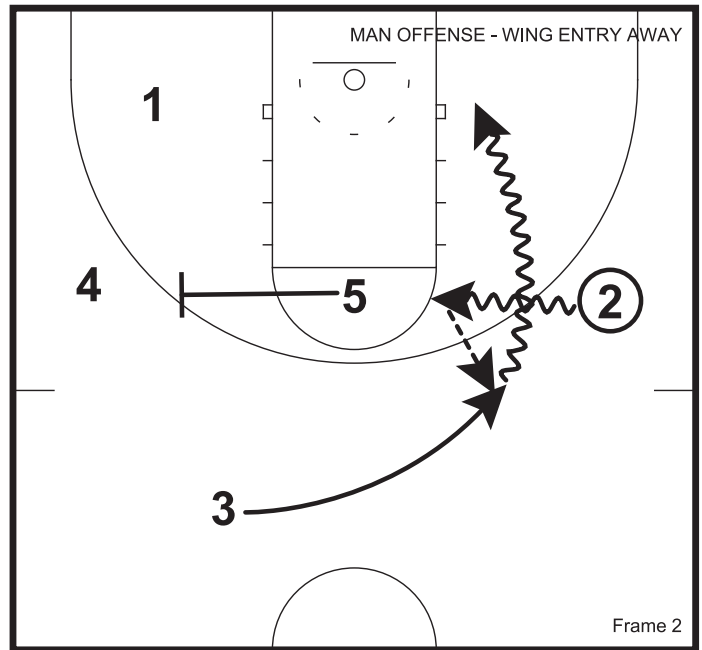


Playing in to a power triangle.

MAN OFFENSE - WING ENTRY AWAY

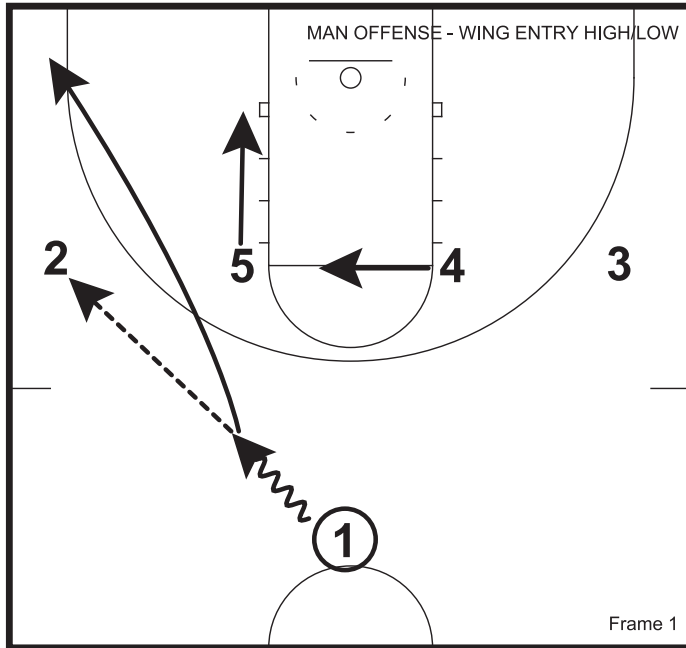


Initial alignment is a 2-3 high set.
1 passes to 2 on the wing and cuts to the opposite corner.

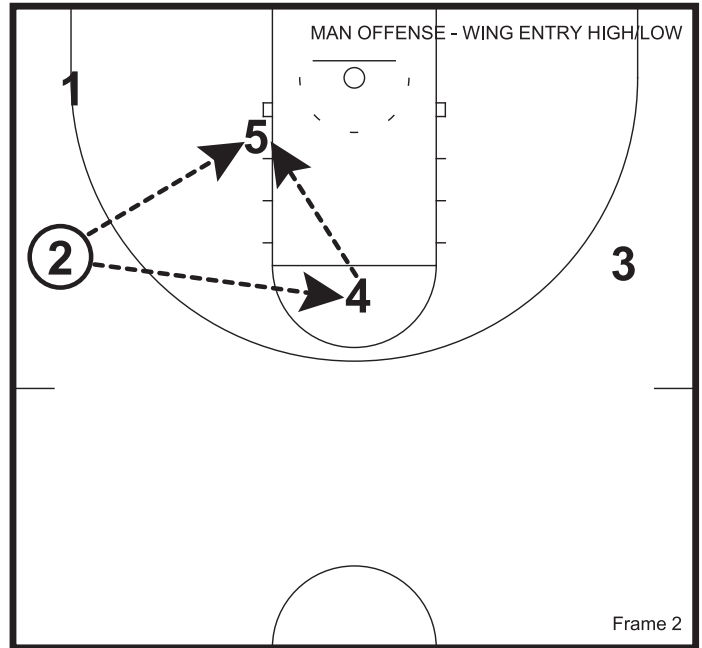


2 drives the ball to the elbow.
3 circles around and receives a pitch from 2.
3 looks to turn the corner going baseline.
5 sets a fluff screen to occupy the weak side defense.

MAN OFFENSE - WING ENTRY HIGH / LOW



Initial alignment is 1-4 high.
1 enters the ball to 2 on the wing.
1 then cuts to the ball side corner.
5 dives to the ball side block 4 flashes to the high post.



2 looks to post feed to 5 or pass to 4 who then looks high/low to 5.