



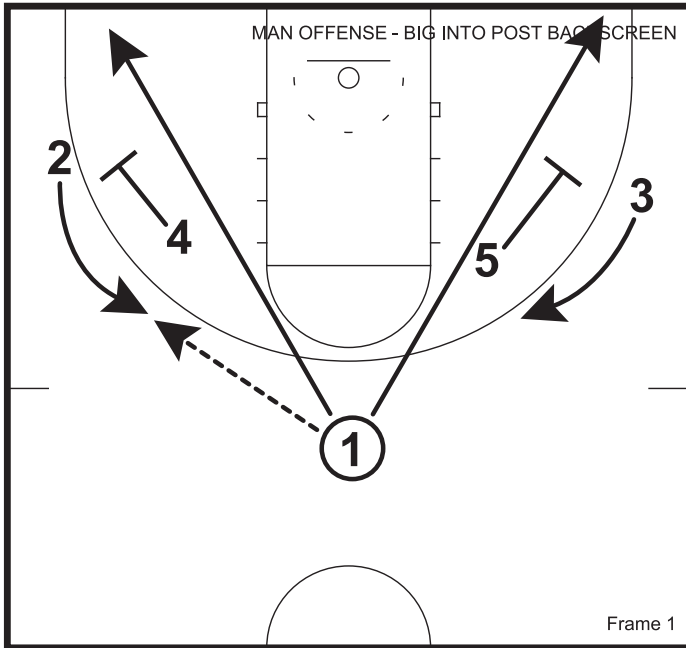
PLAYS OF THE WEEK

XAVIER NEWSLETTER #162

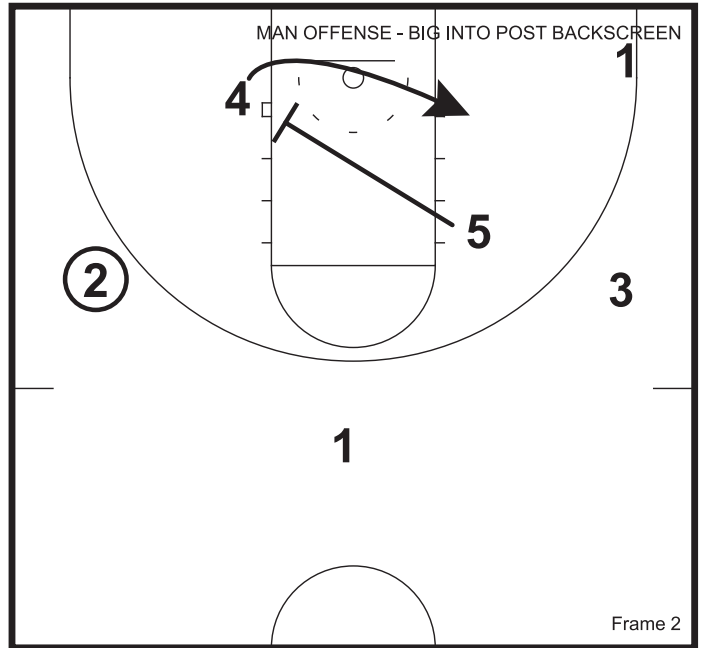
OCTOBER 8, 2013

1.1	MAN OFFENSE - BIG INTO POST BACKSCREEN	4
		5
		6
1.4	MAN OFFENSE - RED HANDOFF / STAGGER BS	7
		8
		9
		10
		11
		12
		13

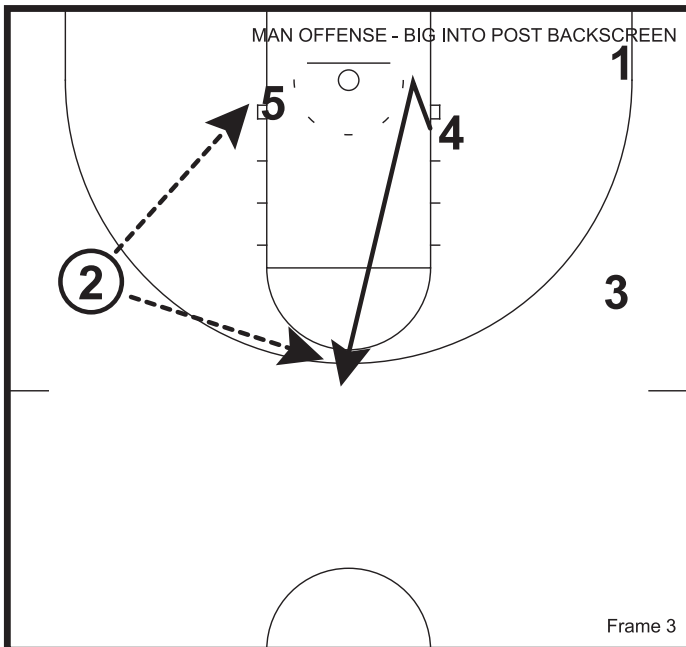
MAN OFFENSE - BIG POST INTO BACKSCREEN



Can enter with pindowns, wing swing or Iverson.

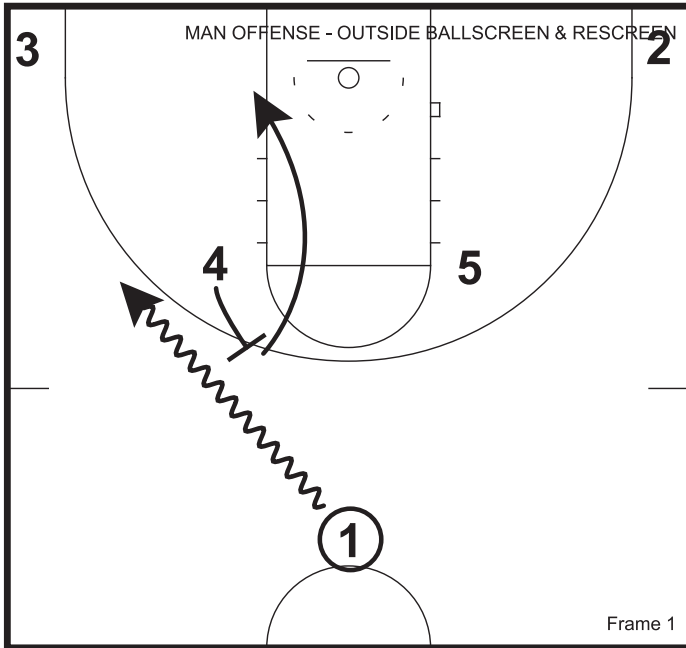


Bigs set a post backscreen for a quick post up.

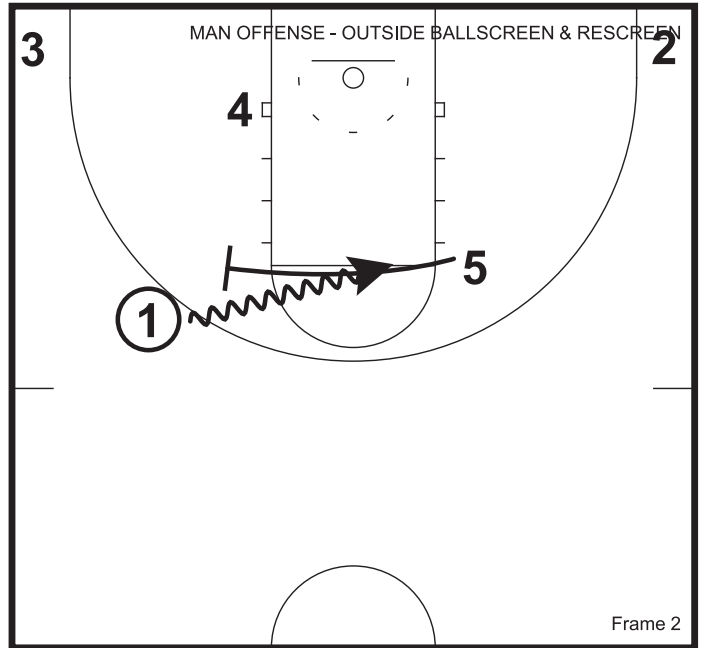


Feed 5 or into PATTERN.

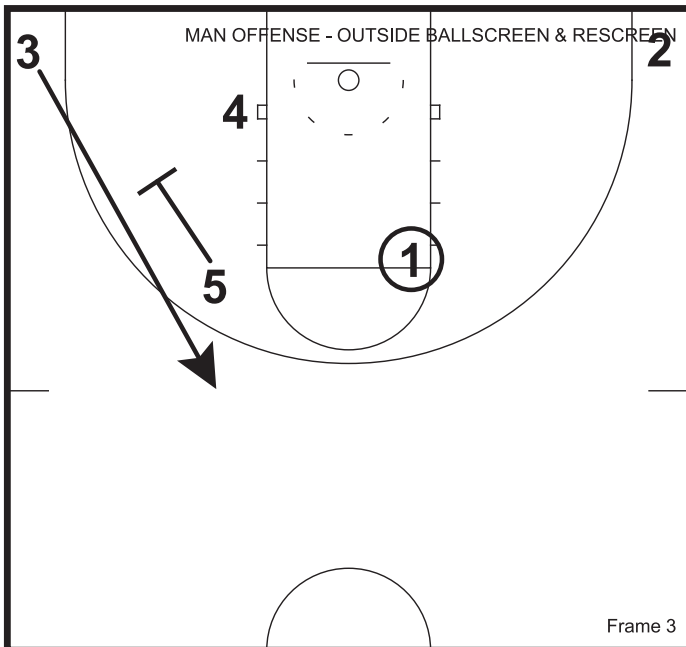
MAN OFFENSE - OUTSIDE BALLSCREEN RESCREEN



1 uses 4's outside ballscreen.
4 rolls to the rim.

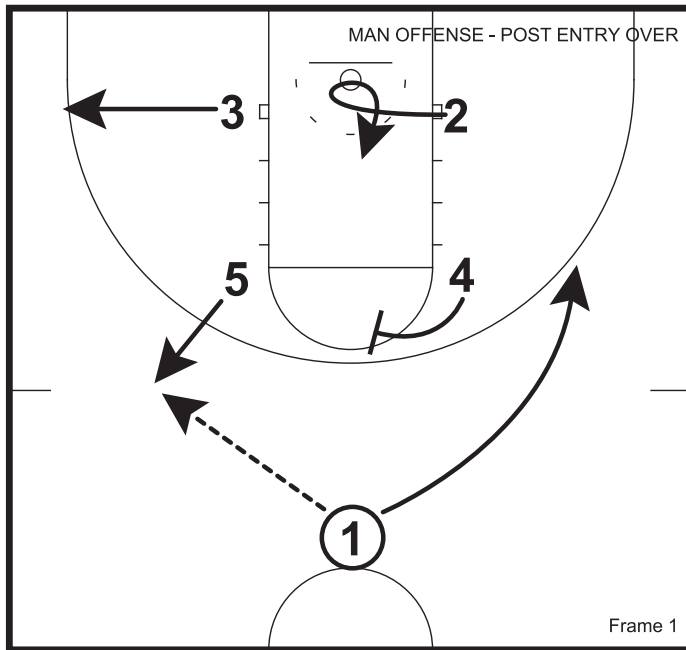


5 rescreens for 1.

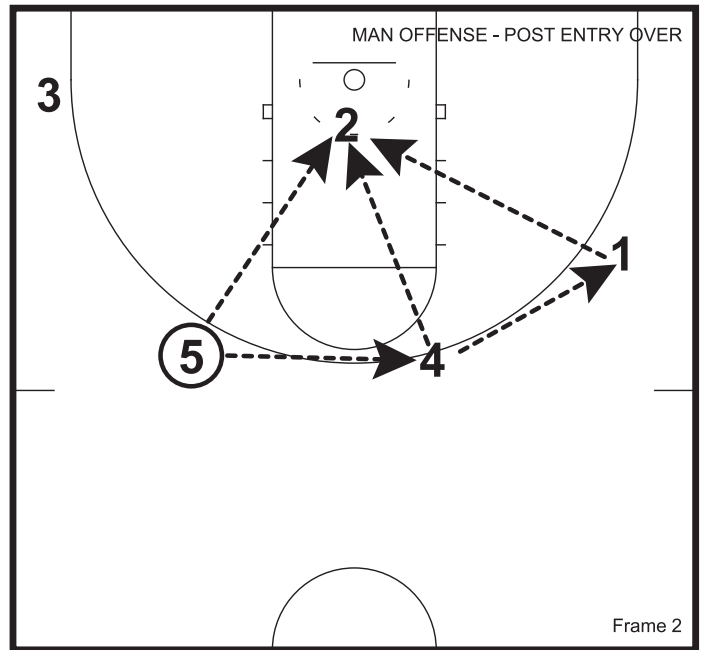


5 sprints into a pindown for 3.

MAN OFFENSE - POST ENTRY OVER

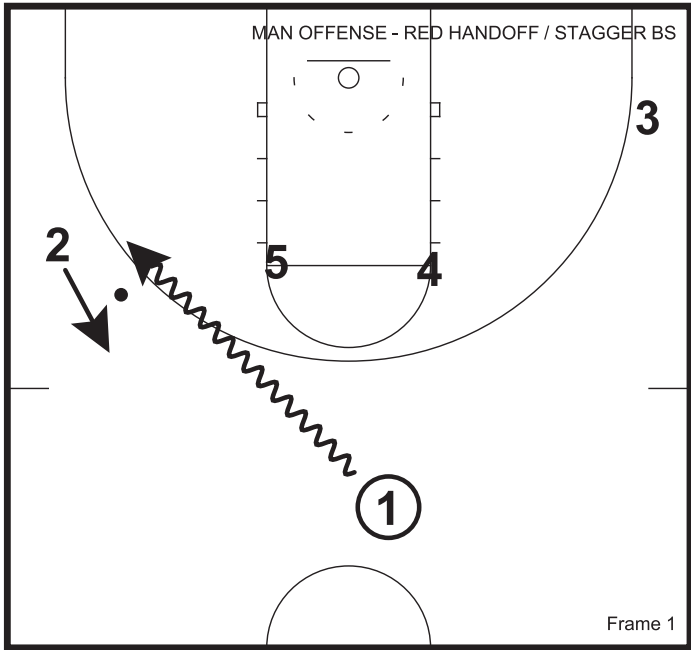


Initial alignment is a box set 5 pops to receive the entry.
3 pops to the ball side corner.
4 sets a fluff flare screen for 1.
2 ducks his man in the lane looking for the ball.

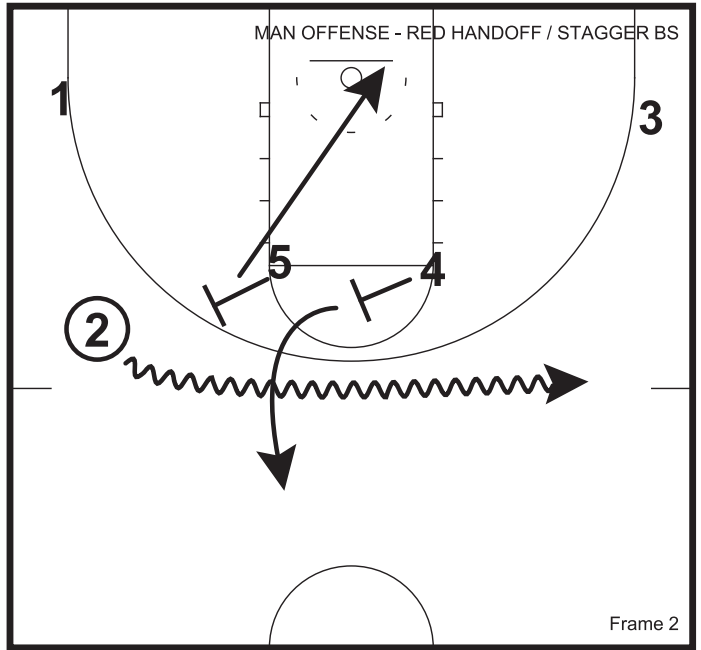


If 5 can't hit 2, he will pass to 4 who then looks to feed 2 in the post.

MAN OFFENSE - RED HANDOFF / STAGGER BS

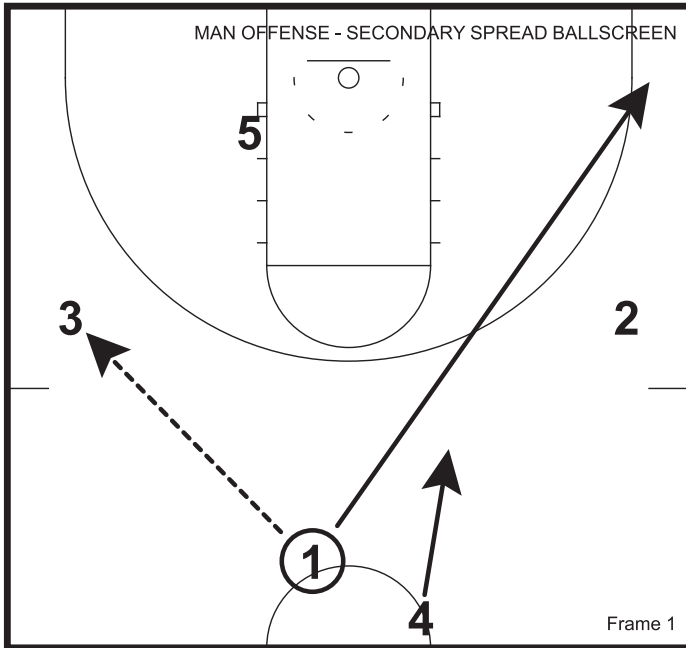


1 dribble handoffs to 2.

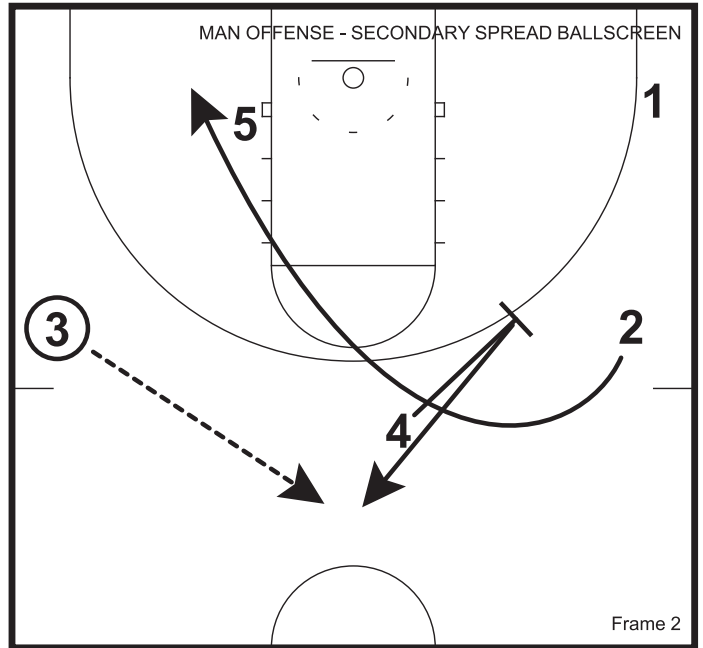


2 looks for 5 cutting to the hoop.

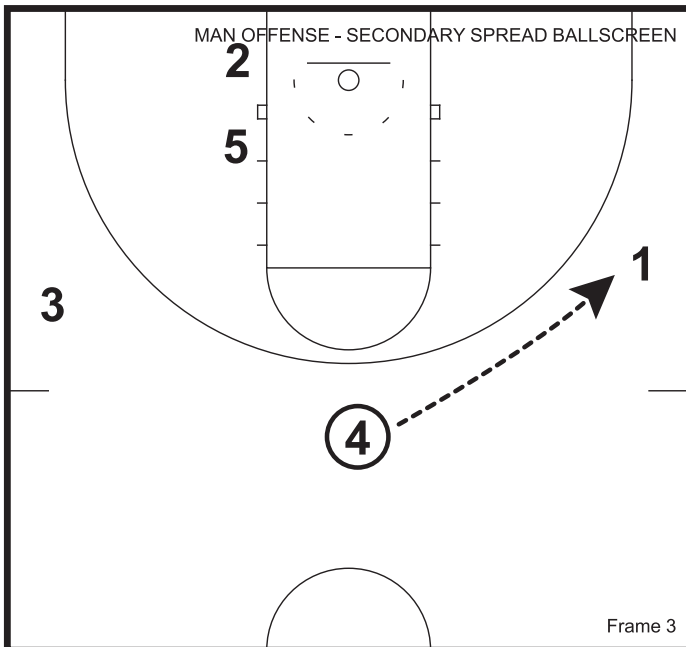
MAN OFFENSE - SECONDARY SPREAD BALLSCREEN



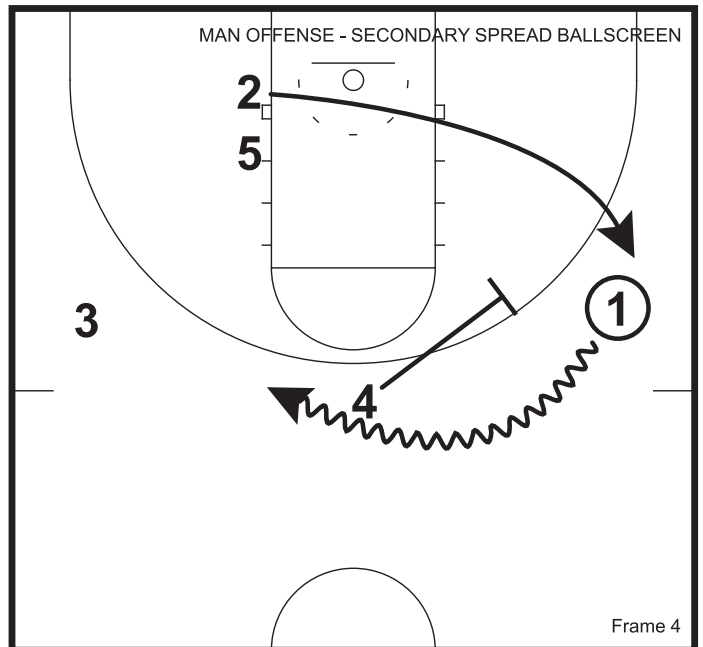
1 Enters and cuts through opposite.
4 Trails.



4 Screens away and 2 cuts all the way through.

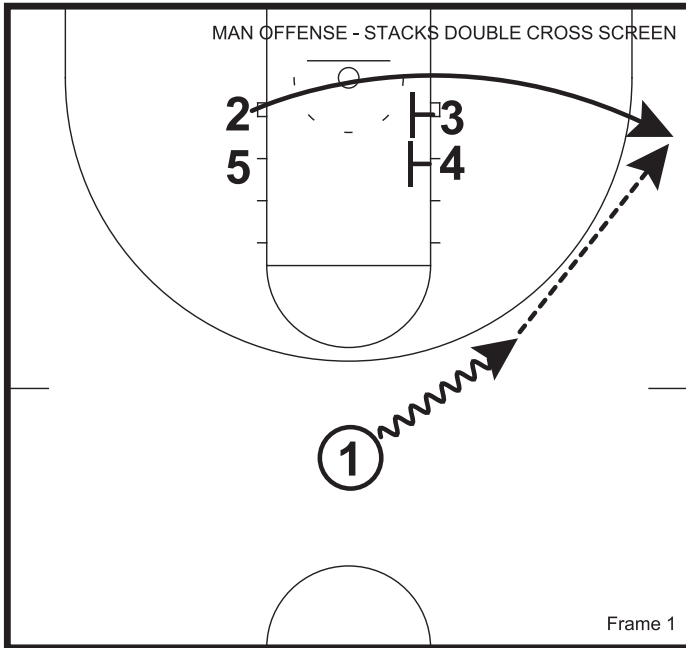


4 Follows his pass in to a ballscreen.

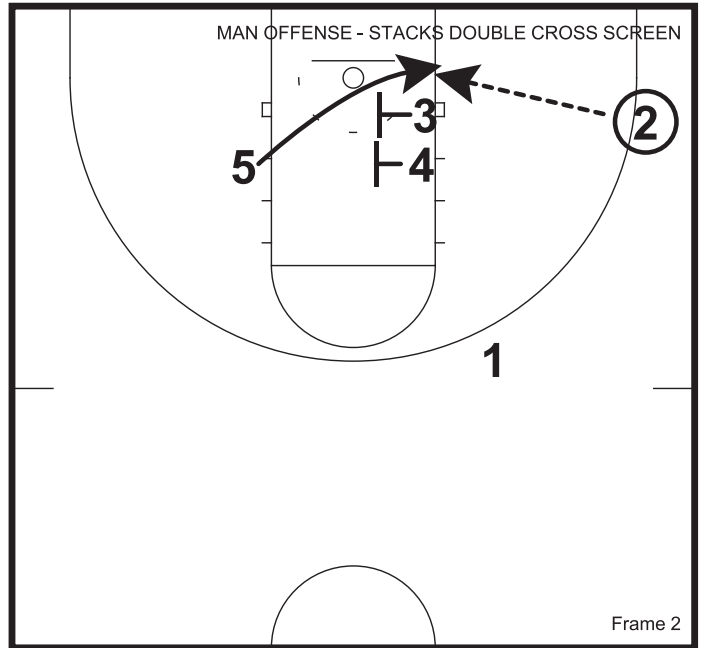


As 4 screens 2 can either space or trade behind.

MAN OFFENSE - STACKS DOUBLE CROSS SCREEN

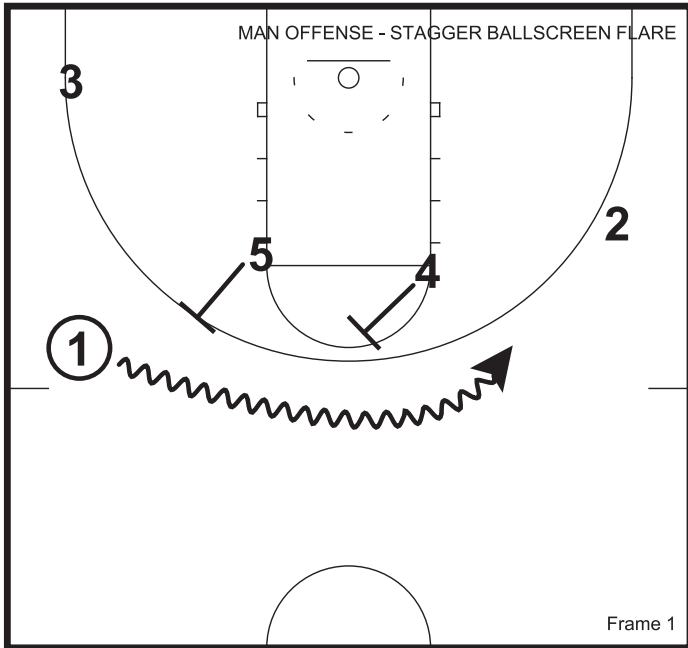


Initial alignment is low stacks 4 & 3 set a double screen for 2.
1 passes to 2 below the 2nd hash mark.

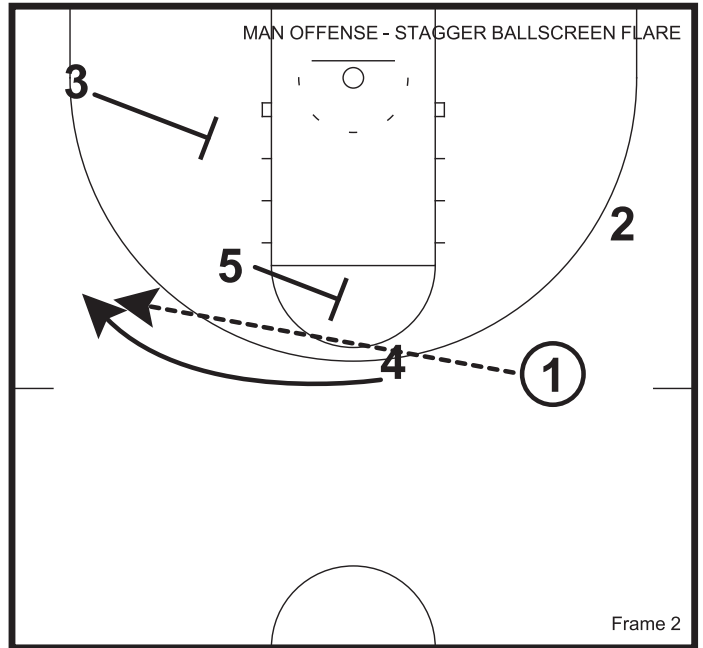


3 & 4 then set a double cross screen for 5.

MAN OFFENSE - STAGGER BALLSCREEN FLARE

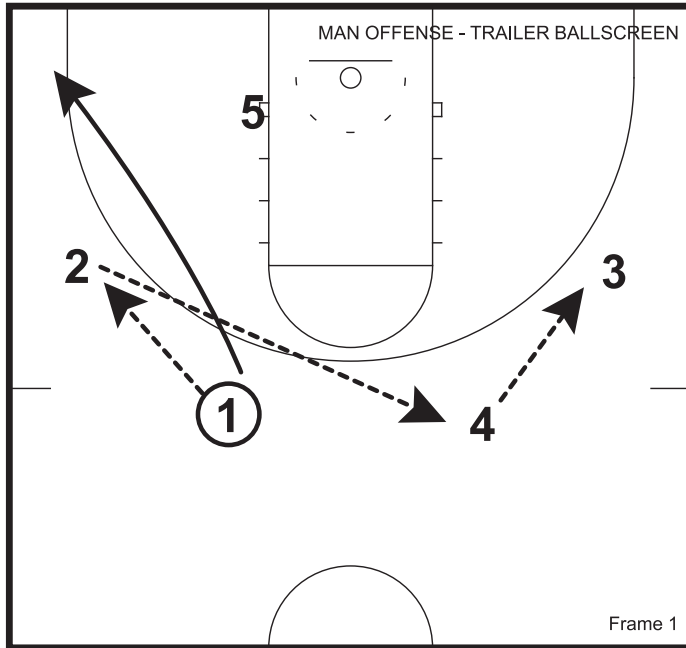


1 comes off of screens set by 4 and 5.

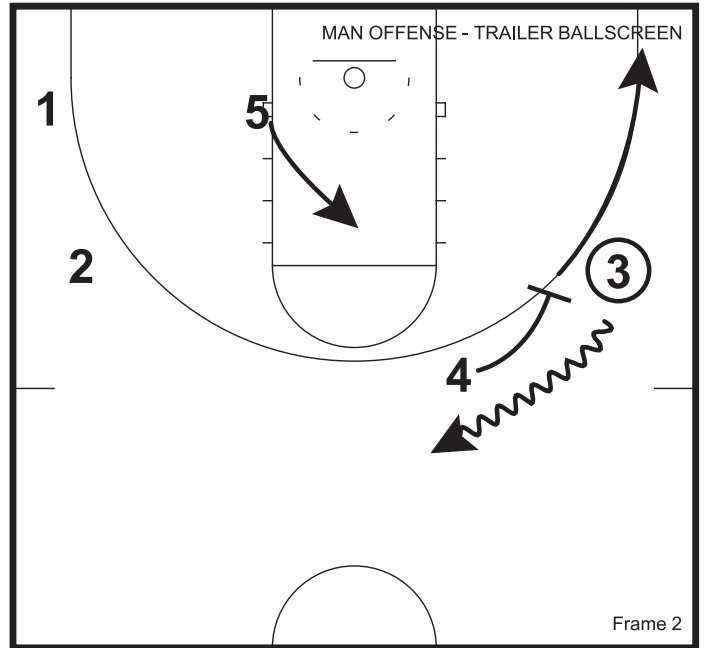


1 looks for an open 4 on the wing.

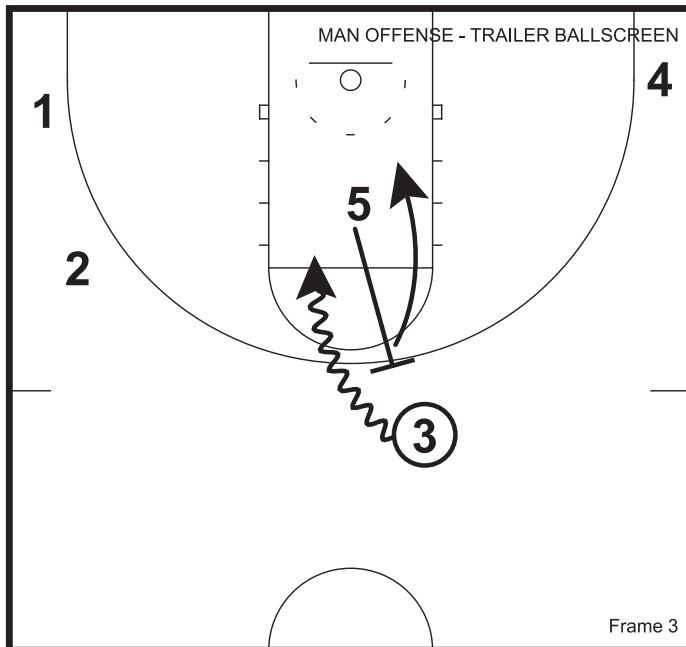
MAN OFFENSE - TRAILER BALLSCREEN



Wing Entry/Strong Cut

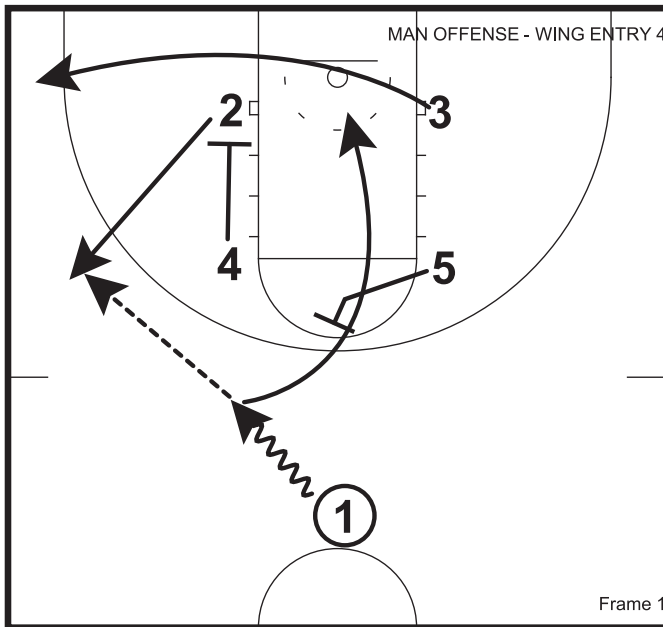


SBS/Pop

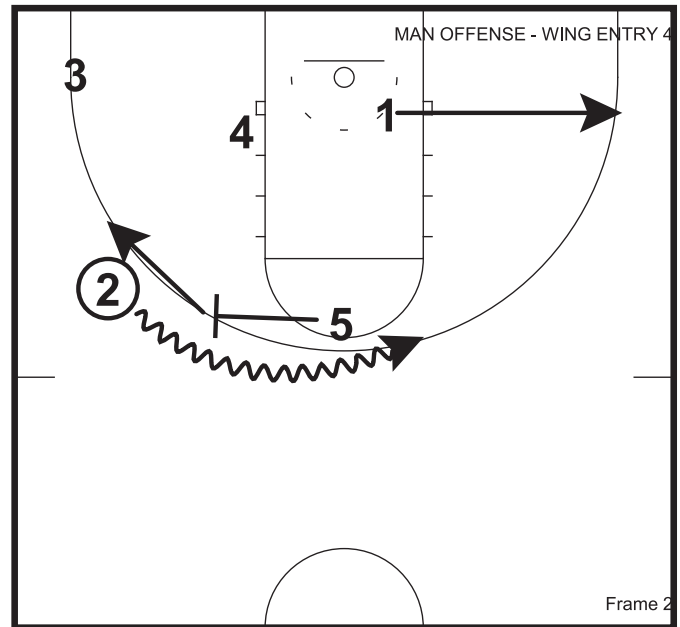


Flat Ballscreen

MAN OFFENSE - WING ENTRY 4

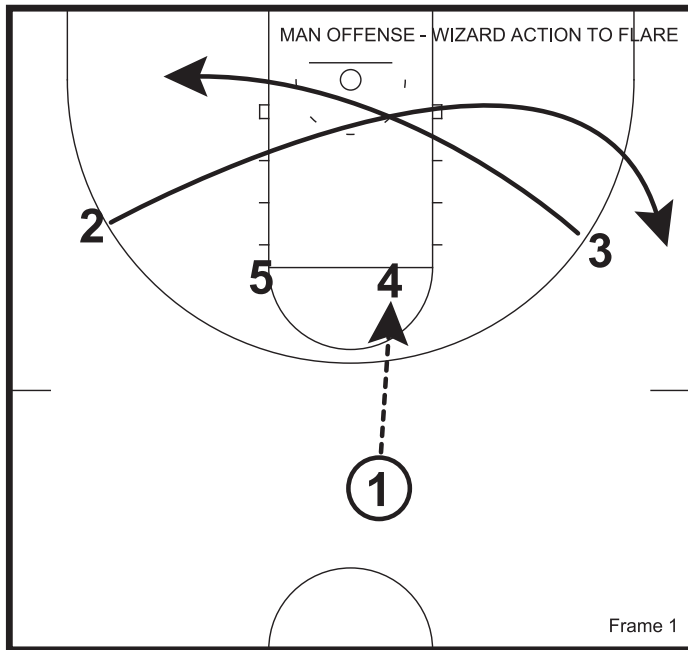


Initial alignment is a box set.
 4 sets a pindown screen for 2 who pops to the wing to receive the entry pass.
 3 clears to the ball side corner.
 5 lines himself up between 1 and the rim and sets a back screen for 1.
 2 looks to throw the lob to 1.

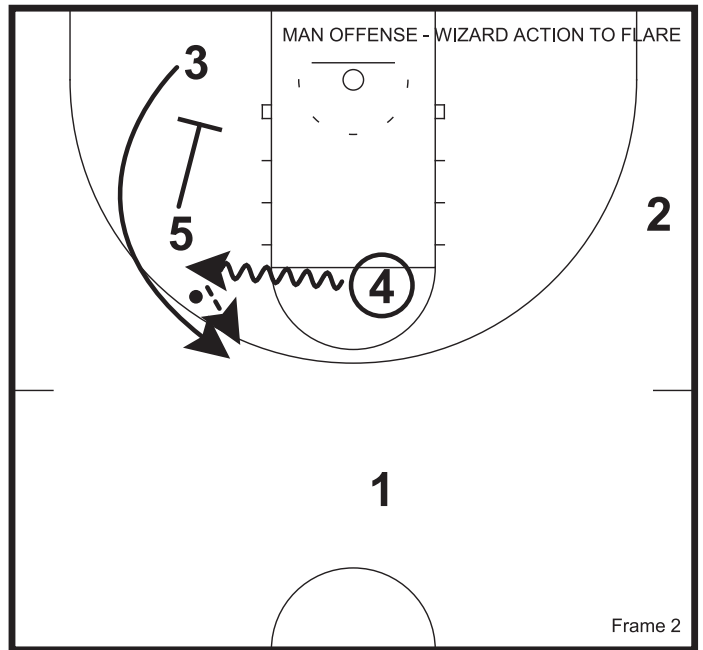


If the lob isn't there, 5 sprints into a ball screen for 2 and then pops.
 2 looks to turn the corner to make a play.

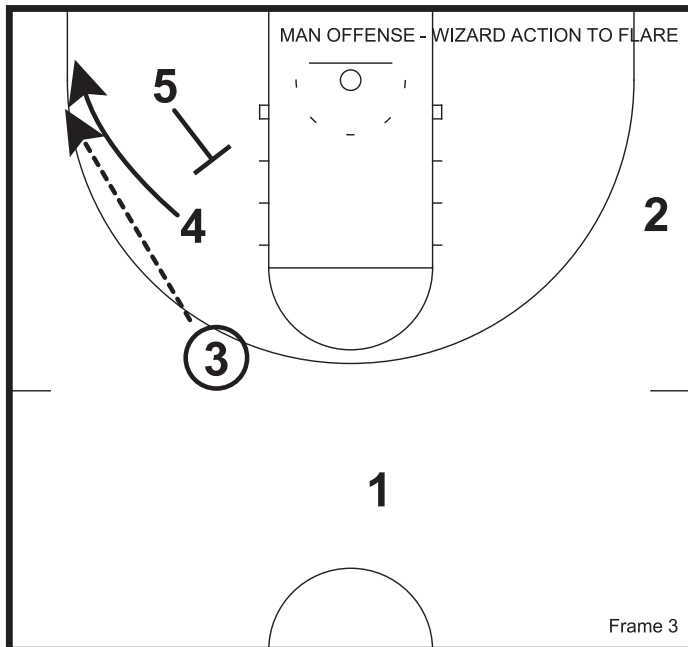
MAN OFFENSE - WIZARD ACTION TO FLARE



1 passes to 4.
2 and 3 cut thru and switch sides.



5 screens for 3.
4 hands off to 3 on the cut.



4 drops to corner.
3 looks for 4.

#COMPETE

